

ICE HOCKEY SYSTEMS

SKILLS

BREAKDOWN

GIVE & GO'S (Pass & Move)

ICE HOCKEY SYSTEMS **SKILLS** BREAKDOWN

KEY POINTS

1. **Head Up**

This allows you to scan the ice to know where your teammates are and where the open space is.

2. **Explode to Open Space**

As soon as you make a pass, explode to open space. Add in deception to confuse the defense.

3. **Speed Is Hard to Defend**

The faster you skate to space, the harder it is for the defense to defend.

4. **If No Space or Puck, Drive To Net**

If you do not have space or receive the puck back, driving to the net will cause disruption and create space for your teammate.

| | | |
|------|-----|-----|
| MSG | NYR | WSH |
| 2ND | 1 | 3 |
| 3:07 | | |

Challenge, Pass & Drive



| MSG | NYR | WSH |
|-------------|-----|-----|
| 2ND 3:07 | 1 | 3 |

zoom



After passing the puck, Panarin accelerates past the defender and tries to get far post for one-time shot

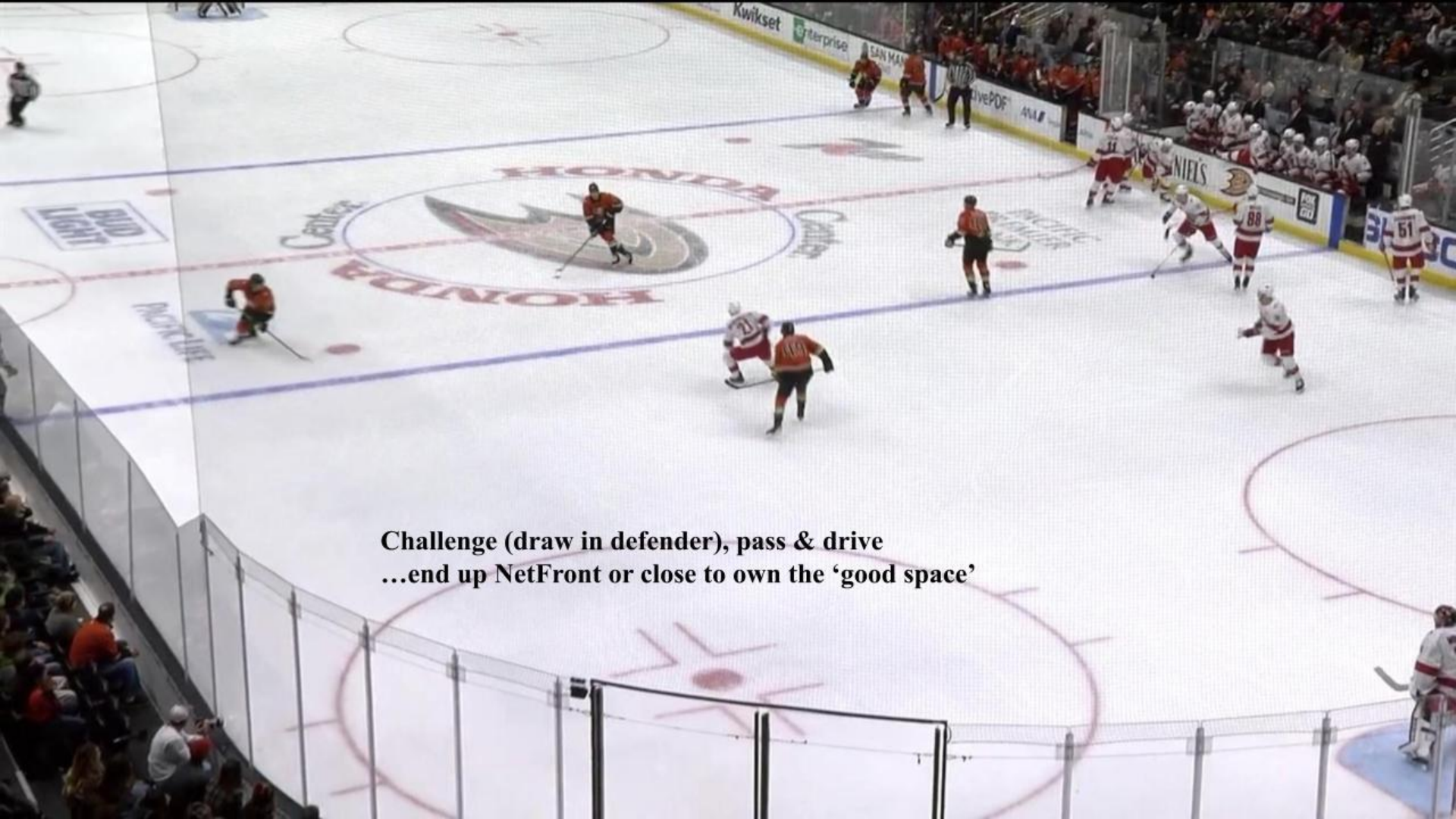
| MSG | NYR | WSH |
|-------------|-----|-----|
| 2ND 3:06 | 1 | 3 |

zoom

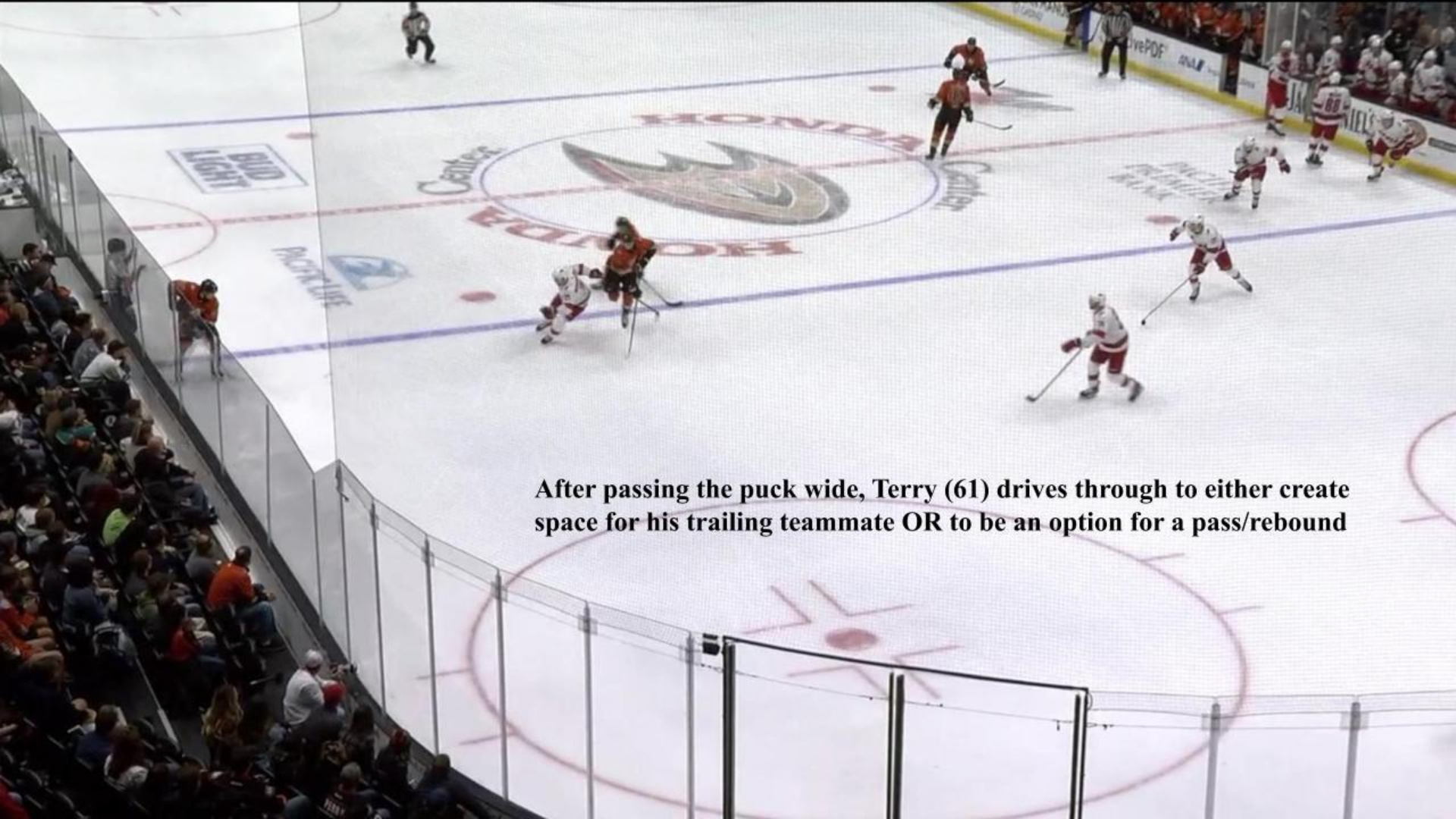


As the puck arrives, Panarin (with a firm bottom hand on his stick) will one-time the puck at the exact moment the puck comes to his blade






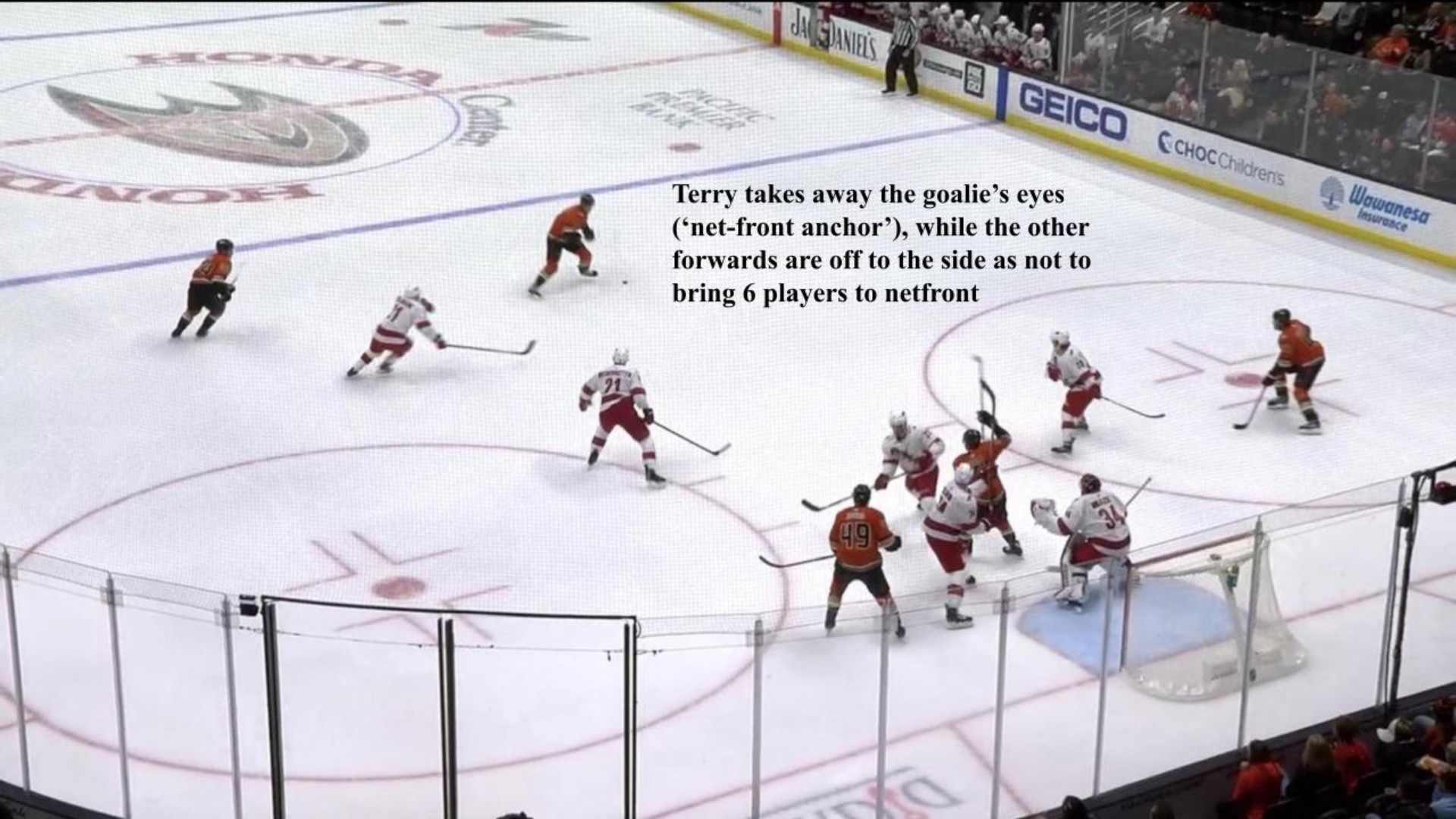
**Challenge (draw in defender), pass & drive
...end up NetFront or close to own the 'good space'**



After passing the puck wide, Terry (61) drives through to either create space for his trailing teammate OR to be an option for a pass/rebound

A wide-angle shot of an ice hockey game in progress. The ice is white with red and blue markings. A large circular logo is in the center. Several players in red and white jerseys are on the ice. A referee in a black and white striped shirt is also visible. The arena is filled with spectators in the stands. The text is overlaid on the upper left portion of the ice.

Terry, skates to the corner as an option but does NOT get the puck, so he now must work his way to the net



**Terry takes away the goalie's eyes
(‘net-front anchor’), while the other
forwards are off to the side as not to
bring 6 players to netfront**



TOR 2 WSH 1 2nd 14:58 THOMPSON CREEK WINDOW COMPANY

EAGLEBANK Sports WASHINGTON

Giant

Kuznetsov, passes the puck wide and drives through





Due to his speed, Kuznetsov is able to get a return pass despite the back checking efforts of the Leaf's forward

TOR 2 WSH 1 2nd 14:56 THOMPSON CREEK WINDOW COMPANY

EAGLEBANK

NBC Sports
WASHINGTON



As Kuznetsov gets a half step around the back checker, he protects the puck but cutting into the middle while extending his right knee to protect a stick check



